

SCIE

Shenzhen College of International Education



深圳国际交流学院

Shenzhen College of International Education

办中国最好的国际高中



School coffee shop courtyard



A top international school for Oxbridge placements outside the UK (Ranking 3RD in 2020)



The opportunity to teach IGCSE & A-Level courses at the highest level to highly motivated gifted & talented students.



Highest number of CAIE academic awards in China.



A welcoming and friendly family of professional colleagues.

1

2

3

4



Why should I consider a teaching post at SCIE?

A culture that highly respects teachers.

With cheaper cost of living than and high saving potential.

A great work life balance - six periods of personal time and 24 lessons (only teaching) a week. (55% contract time)

Located in South China, Shenzhen is the fourth top city in China; quick and easy access to all places; low pollution and good warm climate.

5

6

7

8

Founded in 2003 with the approval of the Shenzhen Education Bureau as the first full-time high school (Y10 to Y13) teaching an international curriculum in the city, SCIE is a highly selective day and boarding school. Using English as the medium of instruction and communication, the College offers IGCSE, AS and A-Levels to students aged 14 to 18.

Although privately owned, SCIE is governed by a Board of advisors composed of representatives of staff, parents, the school owners, and management is wholly run by the Principal Team.

SCIE is accredited by the Council of International Schools (CIS) and the Accrediting Commission for Schools (ACS WASC). We are a member school of the regional organisations EARCOS and FOBISIA.



Curriculum

The four-year programme at SCIE is divided into two years of IGCSE and two years of A-Levels mostly through Cambridge International (CAIE). English is a compulsory course across all four years at SCIE. English follows the Edexcel syllabus, our students learn IGCSE language from the start and move onto GCSE Language in their AS year. A significant number also study AS & AL English Language and Literature and EPQ. The College offers the widest range of CAIE courses in China, covering courses in a wide variety of disciplines: Arts, Humanities, Commerce, Mathematics, Physical Education, Sciences and Drama.

SCIE Guiding Statement

Our mission is to educate Students in a Challenging International Environment that leads to academic achievements at the highest level, where they learn Social responsibility, Creativity, Independence, and Enthusiasm, which will provide each student with the best preparation for future opportunities as global citizens.



Faculties

In 2022, the College will have over 180 full-time teachers and 90 administrative staff, of which 130 will be expat teachers. Among the teaching staff, more than 90 have postgraduate qualifications or higher. Teachers come from more than many countries and regions, including Australia, Canada, Colombia, India, Ireland, South Africa Spain, United Kingdom, and the United States.

Our teachers are committed to helping our students realise their full potential. They understand how to help our students achieve outstanding academic performance through providing a wide variety of excellent learning activities. Showing great concern for students, our teachers put students first, and they are generous with their time.

The standard teaching load is 24 lessons x40 minutes periods (mostly doubles) per week. In addition, teachers enjoy six periods of timetabled personal time, when presence on campus is not expected. So, they can go home and not feel guilty. Although we have day and boarding students, teachers have no boarding responsibilities.



Staff Council

Our elected Staff Council is composed of members of staff, responsible for meeting with the school's leadership team regularly to discuss current staff concerns, organising staff activities (such as staff trips, dinner functions, etc), and managing an overall staff budget that covers many different areas. They also present the annual pay review to the Board.

The Staff Apartment Committee is currently comprised of three members: one childless teacher, one teacher with children and one teacher's spouse. They meet with the property management team regularly and communicate the issues that employees and residents have discussed with them. They will also meet on behalf of the apartment residents with the Senior leaders of the school, to deal with unresolved issues.

Offers

Students at SCIE are highly motivated and they aspire to attend the best overseas universities. The Class of 2021 received 31 Oxbridge offers and 224 offers from G5 universities in the UK, in addition to outstanding offers from top US universities and liberal arts colleges, including Chicago, Johns Hopkins, Stanford, Berklee and UCLA. The SCIE curriculum, whilst recognising Chinese students' strengths in Mathematics and the Sciences, encourages and supports a full range of the Humanities and Arts through ECAs and external competitive events such as John Locke Institute Essay Competition and various research projects. Last year, the College celebrates offers from Cambridge architecture and Oxford psychology. Our artists and musicians enjoy offers from top art and music schools, including the Pratt Institute and Berklee College of Music and the Courtauld and Royal College of art in the UK.

ECAs

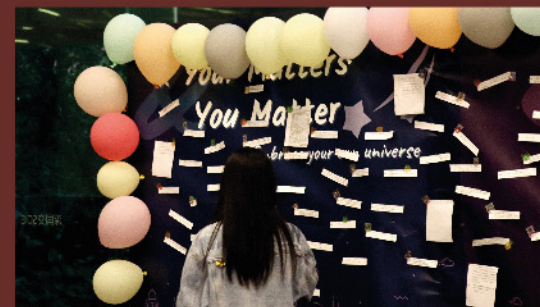
At SCIE, alongside academic excellence, emphasis is placed on the non-academic development of a student. There are more than 100 ECA clubs, varied community service opportunities, rigorous inter-house competitions and a strong student leadership team. SCIE has continued to be the first-choice high school for students and parents in and beyond Shenzhen. Our pastoral provision provides a form tutor system with tutors mentoring their students through the college. The boarding facility is staffed locally by an experienced team who also oversee student evening study and arrange weekend activities.

Expansion

The move to the new site has seen an expansion in student population to 1850 students across four year levels in 2022, with a further phased increase to 2000 by 2023. The majority of our students are Chinese and about 25% of them are non-Shenzhen based.

Admission

With particular focus on English proficiency and Mathematics, the College admits students through a rigorous internal assessment process. The average acceptance rate in the past few academic years has been around 10%.



Facilities

In August 2020 we moved to our brand new purpose-built campus in Antuo Hill. The new site is fully equipped for the College expansion with smart classrooms, Arts and Music classrooms, 40 science laboratories, a 750-seat theatre, sports facilities and all that we need to facilitate the high quality teaching and learning of the College community. The top floor, with a comfortable staff lounge, gym and designated areas for meetings and CPD, is accessible to staff only.



Teacher Office



Library



Theatre



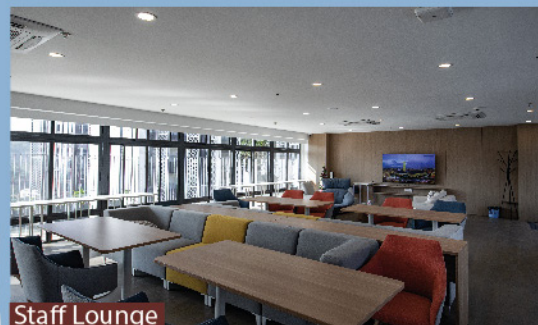
Art Classroom



Cafe



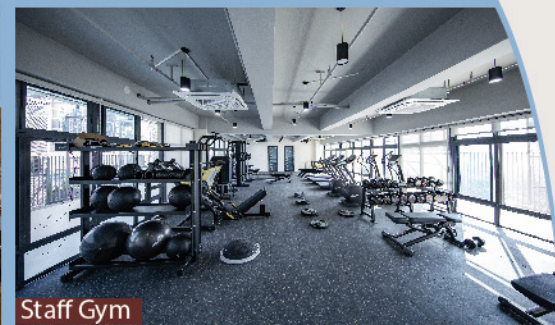
Canteen



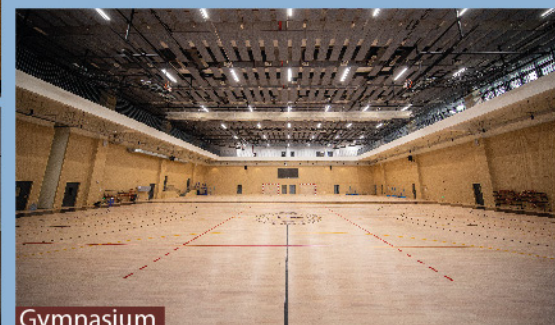
Staff Lounge



Volleyball Court



Staff Gym



Gymnasium



Football Court



Gallery



Classroom



Laboratory



Music Classroom



Remuneration

To reach the entry point on the salary scale, teachers must have at least:



A degree in the area of expertise

Qualification

A teaching qualification (PGCE or equivalent)

≥ 2 Years

Two-years of teaching experience

Benefits

Benefits includes full international medical insurance, annual travel allowance, school provided accommodation, subsidized meals during working days, and monthly responsibilities allowances (where applicable).

We also have a Health and Wellbeing program for staff including weekly, online seminars on different topics of concern, such as Covid-related stress, adjusting to new environments, and work-related stress. There is also an option to book private, individual sessions that are strictly confidential and can cover a wide range of independent concerns. All Expat staff are invited to partake in the Wellbeing program provided by Wetalk, a reputable outside organization that has years of experience working with international schools in Shenzhen and elsewhere.

Salary

Level	RMB per month
20	29,700
21	30,500
22	31,400
23	32,200
24	33,000
25	33,800 Maximum entry point
26	34,900
27	35,900 Maximum entry point for Heads of Faculty and SLT
28	36,900
29	37,900
30	39,000
31	40,000
32	41,000
33	42,000 Maximum

USD 1 = RMB 6.40 GBP 1 = RMB 8.76
(As of 30 Oct, 2021)



In addition, the starting salary is increased by one point for every two years teaching at AS/AL, IGCSE or equivalent. The highest starting point is 25. After joining SCIE, teachers progress one point each year up to the maximum.

Note: Average tax rate of the salary is about 20%



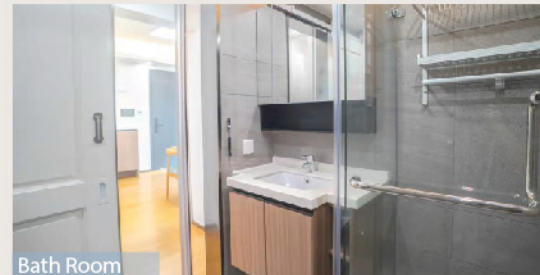
Single Standard Apartment - Living Room



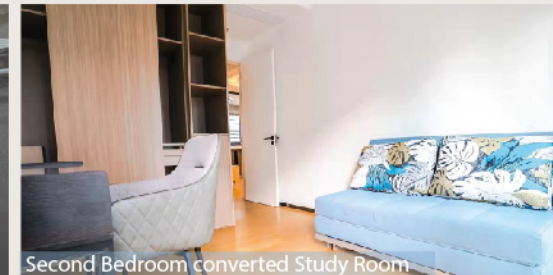
Couple Standard Apartment - Living Room



Family Standard Apartment - Living Room



Bath Room



Second Bedroom converted Study Room



Single Standard Apartment - Kitchen



Master Bedroom

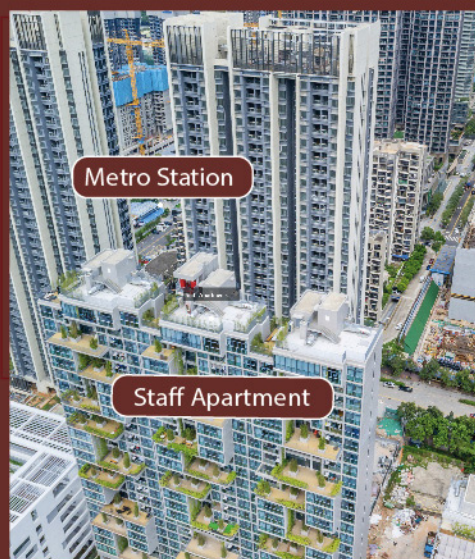
Accommodation

Different styles fully furnished apartments are provided by the school.

Standard Single Staff Apartment
-Master bedroom
-Second room converted to study room with folded sofa bed

Couple Standard Apartment
-Master Bedroom
-Second Bedroom
-Inner Balcony

Family Standard Apartment
-Master Bedroom
-Second Bedroom
-Function Room can be converted to Study Room with folded sofa bed, or to a Children Bedroom



Living in Shenzhen

Celebrating its 40 year Special Economic Zone status in 2020, Shenzhen is one of the most modern cities in the world. It is a well-planned city with large areas of green space and many cycle paths. Compared to most big cities in China, Shenzhen enjoys clean air with easy access to nature.

Shenzhen is a cosmopolitan city that often pleasantly surprises expats. In addition to how green it is, the city offers many cultural attractions and outdoor pursuits. International brands, such as Starbucks, Uniqlo and Sam's Club, are found throughout the many shopping malls and areas.

SCIE has very diversified staff: single, married, married teaching couples and families and they come from all corners of the world. Staff have a wide range of interests and Shenzhen can entertain all of them. For many, the experience of living in Shenzhen far outweighs initial expectations.

For those wishing for a change, the Hong Kong border is very close, and you can be in the hustle and bustle of downtown Hong Kong within an hour. Many make weekly trips to Hong Kong for delicacies you may be missing from home that you haven't yet found in Shenzhen.

SCIE is my first international school, which meant I was a little nervous about moving from the UK to China. However, I feel so at home here that I really didn't need to be worried at all! I am thrilled to work with such talented students – their determination, enthusiasm and ability never ceases to amaze me. It has been such a joy to meet colleagues from across the globe; not only are they fantastic to work with but they have been so accommodating at welcoming me and my partner into the SCIE community.

–Ruth Cooper, Head of GL English (new from August 2020)

The campus is in an excellent location situated on the metro and equidistant between two vibrant areas; the CBD area of Futian which is where the Ping'an Tower is situated and Sea world, Nanshan. A popular area for expats with a wide range of diverse restaurants and the Design society (Victoria and Albert Museum).

SCIE organizes an excellent range of staff events from sporting activities, to social events such as quiz nights. In addition, I have been fortunate to attend excellent staff trips to variety of locations. In terms of the school as well as having the chance to teach fantastic students who share my passion for Sociology and decided to pursue this or related courses at university.

In Politics ECA we have had fun recreating PMQs and on a professional level SCIE have supported me in running an international conference on active learning and becoming a trainer for Cambridge.

– Richard Driscoll, CPD Leader & Head of Humanities Faculty (Joined SCIE in 2014)

Location

SCIE located in Futian, the CBD district of Shenzhen. The campus is within walking distance to the international shops, supermarkets, and restaurants. It is a stone's throw away from the Antuo Hill subway station, providing easy and convenient access to the city's extensive metro network.



Cost of Living in Shenzhen



Metro Station	¥2.00 (minimum fare)
Taxi	¥10.00 (first 2km) ¥2.60 (per additional km)



	(Approx)
Chinese restaurant	¥40.00
Chinese banquet-style	¥142.00
Western restaurant	¥150.00



Milk (780ml)	¥27.99
Rice (500g)	¥9.90
Eggs (10)	¥18.90
Chicken breast (500g)	¥18.60
Apples (500g)	¥9.00
Oranges (500g)	¥14.90
Tomatoes (500g)	¥3.50
Potatoes (500g)	¥3.99
Lettuce (500g)	¥5.99
Still water(1.5l)	¥3.50



We look forward to welcoming you to the friendly and supportive SCIE community. If you have any questions about the College, please do not hesitate to contact: hr@scie.com.cn.

Website: <https://www.scie.com.cn/>

Apply by letter with CV to Vacancies@scie.com.cn

Address: 3 Antuoshan 6th Rd, Futian, Shenzhen, China 518040

Tel: +86 (0)755 8349 5025

VR School Tour: https://720yun.com/t/16vkzm8q71b?scene_id=83054376