

# SCIE

Shenzhen College of International Education



深圳国际交流书院

Shenzhen College of International Education

办中国最好的国际高中





School coffee shop courtyard



A top international school for Oxbridge placements outside the UK (Ranking 3RD in 2020)



The opportunity to teach IGCSE & A-Level courses at the highest level to highly motivated gifted & talented students.



Highest number of CAIE academic awards in China.



A welcoming and friendly family of professional colleagues.

1

2

3

4



Why should I consider a teaching post at SCIE?

5

A culture that highly respects teachers.

6

With cheaper cost of living than high saving potential.

7

A great work life balance - six periods of personal time and 24 lessons (only teaching) a week. (55% contact time)

8

Located in South China, Shenzhen is the fourth top city in China; quick and easy access to all places; low pollution and good warm climate.



# SCIE

Founded in 2003 with the approval of the Shenzhen Education Bureau as the first full-time high school (Y10 to Y13) teaching an international curriculum in downtown, SCIE is a highly selective day and boarding school. Using English as the medium of instruction and communication, the College offers IGCSE, AS and A-Levels to students aged 14 to 18.

Although privately owned, SCIE is governed by a Board of advisors composed of representatives of staff, parents, the school owners, and management is wholly run by the Principal Team.

SCIE is accredited by the Council of International Schools (CIS) and the Accrediting Commission for Schools (ACS WASC). We are a member school of the regional organisations EARCOS and FOBISIA.



## Mission

Our mission is to educate Students in a Challenging International Environment that leads to academic achievements at the highest level, where they learn Social responsibility, Creativity, Independence, and Enthusiasm, which will provide each student with the best preparation for future opportunities as global citizens.

## Curriculum

The four-year programme at SCIE is divided into two years of IGCSE and two years of A-Levels mostly through Cambridge International (CAIE). English is a compulsory course across all four years at SCIE. English follows the Edexcel syllabus for IGCSE and GCSE. A significant number also study AS & AL English Language and Literature.

The College offers the widest range of CAIE courses in China, covering courses in a wide variety of disciplines: Arts, Humanities, Commerce, Mathematics, Physical Education and Sciences.



## Faculties

In 2023, the College will have over 200 full-time teachers and 90 administrative staff, of which 140 will be expat teachers. Among the teaching staff, more than 90 have post-graduate qualifications or higher. Teachers come from more than many countries and regions, including Australia, Canada, Colombia, India, Ireland, South Africa Spain, United Kingdom, and the United States etc.

Our teachers are committed to helping our students realise their full potential. They understand how to help our students achieve outstanding academic performance

through providing a wide variety of excellent learning activities. Showing great concern for students, our teachers put students first, and they are generous with their time.

The standard teaching load is 24 lessons x40 minutes periods (mostly doubles) per week. In addition, teachers enjoy six periods of timetabled personal time, when presence on campus is not expected. So, they can go home and not feel guilty. Although we have day and boarding students, teachers have no boarding responsibilities.



## Staff Council

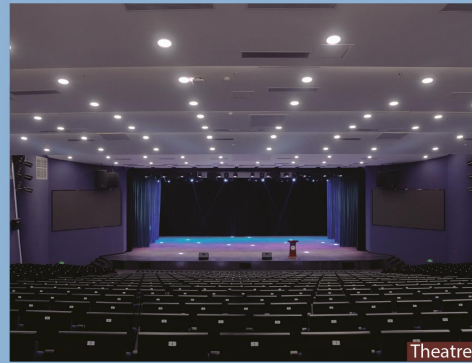
Our elected Staff Council is composed of members of staff, responsible for meeting with the school's leadership team regularly to discuss current staff concerns, organising staff activities (such as staff trips, dinner functions, etc), and managing an overall staff budget that covers many different areas. They also present the annual pay review to the Board.

The Staff Apartment Committee is currently comprised of three members: one childless teacher, one teacher with children and one teacher's spouse. They meet with the property management team regularly and communicate the issues that employees and residents have discussed with them. They will also meet on behalf of the apartment residents with the Senior leaders of the school, to deal with unresolved issues.



# Facilities

In August 2020 we moved to our brand new purpose-built campus in Antuo Hill. The new site is fully equipped for the College expansion with smart classrooms, Arts and Music studios, 40 science laboratories, a 750-seat theatre, sports facilities and all that we need to facilitate the high quality teaching and learning of the College community. The top floor, with a comfortable staff lounge and gym, is accessible to staff only.



Theatre



Classroom



Laboratory



Football Court



Music Classroom



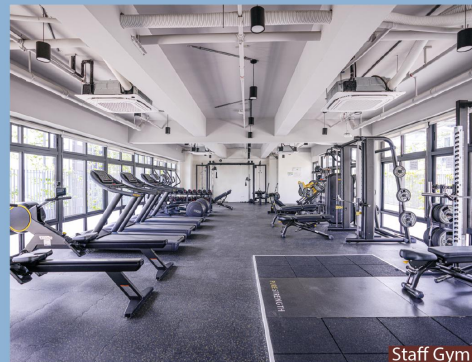
Art Classroom



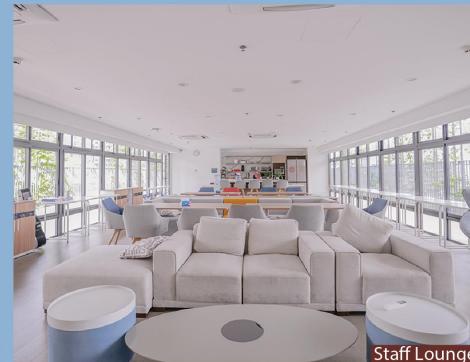
Drama classroom



Library



Staff Gym



Staff Lounge



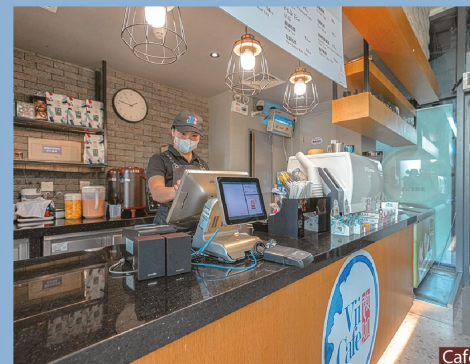
Teacher Office



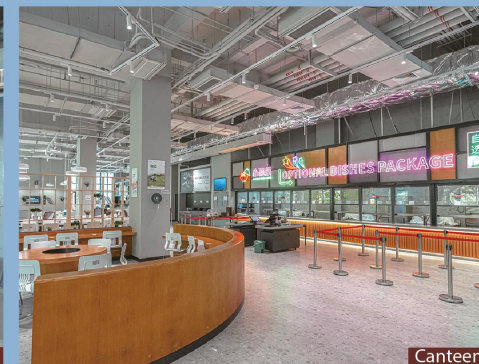
Gymnasium



Volleyball Court



Cafe



Canteen





## Offers

Students at SCIE are highly motivated and they aspire to attend the best overseas universities. The Class of 2022 received 31 Oxbridge offers and 80% students applying to UK achieve offers from G5 universities, in addition to outstanding offers from top US universities and liberal arts colleges, including Stanford, UPenn, Dartmouth, Cornell, and Wellesley.

The SCIE curriculum, whilst recognising Chinese students' strengths in Mathematics and the Sciences, encourages and supports a full range of the Humanities and Arts through ECAs and external competitive events such as John Locke Institute Essay Competition and various research projects. The College celebrates offers from Cambridge Architecture & Medicine and Oxford Mathematics & Computer Science. Our artists and musicians enjoy offers from top art and music schools, including Rhode Island School of Design, Parsons School of Design, Berklee College of Music and University of the Arts London.

## ECAs

At SCIE, alongside academic excellence, emphasis is placed on the non-academic development of a student. There are more than 150 clubs and societies, community service opportunities, inter-house and inter-school competitions and a strong student leadership team. SCIE has continued to be the first-choice high school for students and parents in and beyond Shenzhen. Our pastoral provision provides a form tutor system with tutors mentoring their students through their time at the college. The boarding facility is staffed locally by an experienced team who also oversee student evening study and arrange weekend activities.

## CPD

The quality and quantity of CPD available to staff SCIE is a great strength. Staff can choose which aspect of their teaching or leadership they would like to develop and take full advantage of a range of high-quality professional development packages, including Karen Ardley Associates, the Great Teaching Toolkit and teaching walkthru platforms. We also host international online job alike workshops through organisations such as FOBISIA.

## Teaching & Learning

Teaching and Learning at SCIE is diverse, research-led and personalised. The Teaching and Learning committee, using the Great Teaching Toolkit, review what outstanding teaching looks like and create a monthly newsletter sharing resources created by leading figures in teaching and learning. Teachers are encouraged to take pride in their pedagogy and share examples of good practice via teaching and learning carousel events.

## Admission

With particular focus on English proficiency and Mathematics, the College admits students through a rigorous internal assessment process. The average acceptance rate in the past few academic years has been around 10%.





# Remuneration

To reach the entry point on the salary scale, teachers must have at least:



A degree in the area of expertise



A teaching qualification (PGCE or equivalent)

≥ 2 Years

Two-years of teaching experience

## Salary

| Level | RMB per month(Gross)                                    |
|-------|---|
|       | 2023-2024   |
| 20    | 33700   |
| 21    | 34,500  |
| 22    | 35,400  |
| 23    | 36,200  |
| 24    | 37,000  |
| 25    | 37,800 Maximum entry point                              |
| 26    | 38,400  |
| 27    | 39,500 Maximum entry point for Heads of Faculty and SLT |
| 28    | 40,600  |
| 29    | 41,700  |
| 30    | 42,900  |
| 31    | 44,000  |
| 32    | 45,100  |
| 33    | 46,200  |

USD 1 = RMB 7.26 GBP 1 = RMB 8.42  
(As of 31 Oct, 2022)

In addition, the starting salary is increased by one point for every two years teaching at AS/AL, IGCSE or equivalent. The highest starting point is 25.

After joining SCIE, teachers progress one point each year up to the maximum.

Note: Average tax rate of the salary is about 20%

## Benefits

### ● Annual Flight allowance

13,000 RMB/Year both for self and spouse to be paid directly into salary

### ● International Medical Cover

Full Medical coverage for self & 1 dependent (excl. US)

### ● Free Schooling

Up to 2 dependents tuition FREE from age 5 to 18 at affiliated school (GOS/SOIS) and SCIE (UK Y10–Y13)

### ● Staff Wellbeing Package

Online classes on different topics of concern; private, individual sessions provided by Wetalk organization

### ● Relocation Allowance

Up to 7,000 RMB for Single and 10,000 RMB for Couple

We also have a Health and Wellbeing program for staff including weekly, online seminars on different topics of concern, such as Covid-related stress, adjusting to new environments, and work-related stress.



# Accommodation

Different styles fully furnished apartments are provided by the school.



Kitchen



Bath Room



Second Bedroom converted Study Room



Master Bedroom

## Standard Single Staff Apartment

Master bedroom  
Second room converted to study room with folded sofa bed

## Couple Standard Apartment

Master Bedroom  
Second Bedroom  
Inner Balcony

## Family Standard Apartment

Master Bedroom  
Second Bedroom  
Function Room can be converted to Study Room with folded sofa bed, or to a Children Bedroom



Living Room



# Location

SCIE located in Futian, the CBD district of Shenzhen. The campus is within walking distance to the international shops, supermarkets, and restaurants. It is a stone's throw away from the Antuo Hill subway station, providing easy and convenient access to the city's extensive metro network.

## Cost of Living in Shenzhen



|                               |         |
|-------------------------------|---------|
| Underground<br>(minimum fare) | ¥ 2.00  |
| Taxi<br>(first 2km)           | ¥ 10.00 |
| (per additional km)           | ¥ 2.60  |



(Approx)

|                       |         |
|-----------------------|---------|
| Chinese restaurant    | ¥ 40.00 |
| Chinese banquet-style | ¥142.00 |
| Western restaurant    | ¥150.00 |



|                       |         |
|-----------------------|---------|
| Milk (780ml)          | ¥ 27.99 |
| Eggs (10)             | ¥ 18.90 |
| Chicken breast (500g) | ¥ 18.60 |
| Tomatoes (500g)       | ¥ 3.50  |
| Still water(1.5l)     | ¥ 3.50  |
| Lettuce (500g)        | ¥ 5.99  |

## Living in Shenzhen

Having celebrated its 40 year Special Economic Zone status in 2020, Shenzhen is one of the most modern cities in the world. It is a well-planned city with large areas of green space and many cycle paths. Compared to most big cities in China, Shenzhen enjoys clean air with easy access to nature.

Shenzhen is a cosmopolitan city that often pleasantly surprises expats. In addition to how green it is, the city offers many cultural attractions and outdoor pursuits. International brands, such as Starbucks, Uniqlo and Sam's Club, are found throughout the many shopping malls and areas.

SCIE has very diversified staff: single, married, married teaching couples and families and they come from all corners of the world. Staff have a wide range of interests and Shenzhen can entertain all of them. For many, the experience of living in Shenzhen far outweighs initial expectations.



# Quote from Teachers

SCIE has been a fantastic place to work. The school environment is always bustling with energy and there is always a friendly face to greet you whether it be a student or a staff member! The school gives its staff members every opportunity for personal and professional development, from well being sessions to dance classes to safeguarding exercises. It is truly a well rounded school, who supports each and every person who comes here. Plus, working in the ever so beautiful Shenzhen with all its Natural surroundings and vibrant spots to explore is the cherry on top!

- Yusri van der Schyff (Teacher of English, Form Tutor of G1 and Staff Expatriate Representative)

After three months at SCIE, my overall impression is that it provides a rare opportunity to teach best-in-the-world students in a relaxed, collegiate atmosphere. I especially appreciate the strong emphasis on work-life balance; I am generally able to leave work at the office, and have ample time and energy left over for my family. Shenzhen has been my home for ten years, and has a great deal to offer in terms of excellent food, convenience of living, climate, air quality, parks, mountains, and ocean.

- Scott Edwards (Teacher of Physics, Form Tutor of G1, new from Aug 2022)

SCIE is a wonderful place to work. Since arriving, I have been fully supported by my colleagues and the staff as I adjusted to teaching overseas and a new curriculum. The atmosphere is one that both encourages learning for students and fosters professional growth. One of the best things about working for SCIE and living in Shenzhen is the array of opportunities for activities in the expat community and exploration in the city.

- Rebecca Bohn (Teacher of English, Form Tutor of A1, new from Aug 2022)

At SCIE, I enjoy communicating with students that are both passionate about their academic focus and also keen to learn about the world in general. Their knowledge often surprises me and I feel my own understanding of various phenomena benefits from being in such an environment. Certainly a great place to develop, the impressive campus and flexible working hours make the process that much more comfortable.

- Ben Riley (University Counsellor, joined SCIE in Aug 2021)







We look forward to welcoming you to the friendly and supportive SCIE community. If you have any questions about the College, **please do not hesitate to contact: [hr@scie.com.cn](mailto:hr@scie.com.cn).**

Website: <https://www.scie.com.cn/>

**Apply by letter with CV to [jobs@scie.com.cn](mailto:jobs@scie.com.cn)**

Address: 3 Antuoshan 6th Rd, Futian, Shenzhen, China 518040

Tel: +86 (0)755 8349 5025

