

SCIE

Shenzhen College of International Education

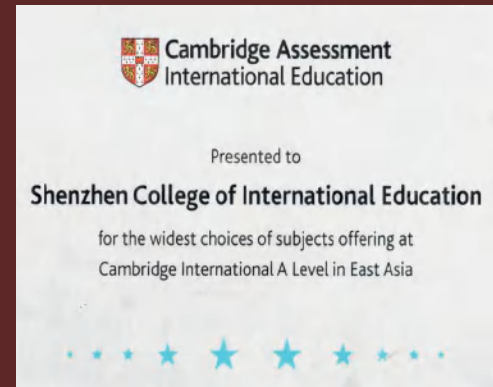


深圳国际交流书院

Shenzhen College of International Education

办中国最好的国际高中

Version Of 2024-2025



A top international school for Oxbridge placements outside the UK (Ranking 3RD in 2020)

The opportunity to teach IGCSE & A-Level courses at the highest level to highly motivated gifted & talented students

Highest number of CAIE academic awards in China

A welcoming and friendly family of professional colleagues

1

2

3

4



Why should I consider a teaching post at SCIE?

5

6

7

8

A culture that highly respects teachers

With cheaper cost of living and high saving potential

A great work life balance - six periods of personal time and 24 lessons (only teaching) a week (55% contact time)

Located in South China, Shenzhen is the fourth top city in China; quick and easy access to all places; low pollution and good warm climate

SCIE

Founded in 2003 with the approval of the Shenzhen Education Bureau as the first full-time high school (Y10 to Y13) teaching an international curriculum in downtown, SCIE is a highly selective day and boarding school. Using English as the medium of instruction and communication, the College offers IGCSE, AS and A-Levels to students aged 14 to 18.

Although privately owned, SCIE is governed by a Board of advisors composed of representatives of staff, parents, the school owners, and management is wholly run by the Principal Team.

SCIE is accredited by the Council of International Schools (CIS) and the Accrediting Commission for Schools (ACS WASC). We are a member school of the regional organisations EARCOS and FOBISIA.



Mission

Our mission is to educate **Students** in a **Challenging International Environment** that leads to academic achievements at the highest level, where they learn **Social responsibility, Creativity, Independence, and Enthusiasm**, which will provide each student with the best preparation for future opportunities as global citizens.

Curriculum

The four-year programme at SCIE is divided into two years of IGCSE and two years of A-Levels mostly through Cambridge International (CAIE). English is a compulsory course across all four years at SCIE. English follows the Edexcel syllabus for IGCSE and GCSE. A significant number also study AS & AL English Language and Literature.

The College offers the widest range of CAIE courses in China, covering courses in a wide variety of disciplines: Arts, Humanities, Commerce, Mathematics, Physical Education and Sciences.



Faculties

In 2024, the College will have over 200 full-time teachers and 90 administrative staff, of which 150 will be expat teachers. Among the teaching staff, more than 90 have post-graduate qualifications or higher. Teachers come from many countries and regions, including Australia, Canada, Colombia, India, Ireland, South Africa Spain, United Kingdom, and the United States etc.

Our teachers are committed to helping our students realise their full potential. They understand how to help our students achieve outstanding academic performance

through providing a wide variety of excellent learning activities. Showing great concern for students, our teachers put students first, and they are generous with their time.

The standard teaching load is 24 lessons ×40 minutes periods (mostly doubles) per week. In addition, teachers enjoy six periods of timetabled personal time, when presence on campus is not expected. So they can go home and not feel guilty. Although we have day and boarding students, teachers have no boarding responsibilities.



Staff Council

Our elected Staff Council is composed of members of staff, responsible for meeting with the school's leadership team regularly to discuss current staff concerns, organising staff activities (such as staff trips, dinner functions, etc), and managing an overall staff budget that covers many different areas. They also present the annual pay review to the Board.

Facilities

In August 2020 we moved to our brand new purpose-built campus in Antuo Hill. The new site is fully equipped with smart classrooms, Arts and Music studios, 40 science laboratories, a 750-seat theatre, sports facilities and all that we need to facilitate the high quality teaching and learning of the College community. The top floor, with a comfortable staff lounge and gym, is accessible to staff only.



Theatre



Classroom



Laboratory



Football Court



Music Classroom



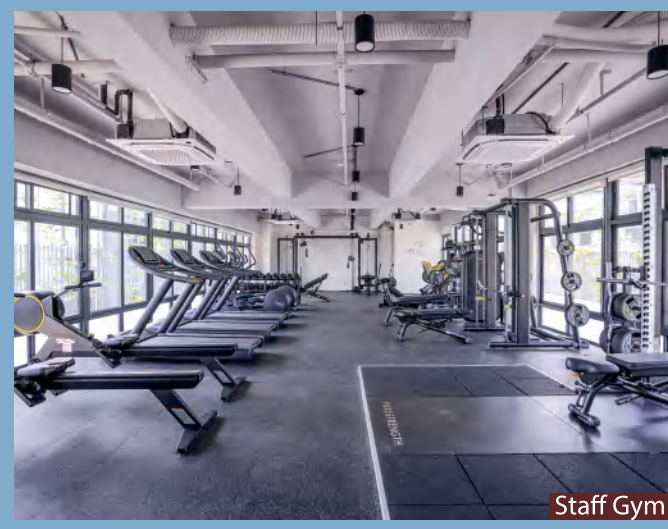
Art Classroom



Drama classroom



Library



Staff Gym



Staff Lounge



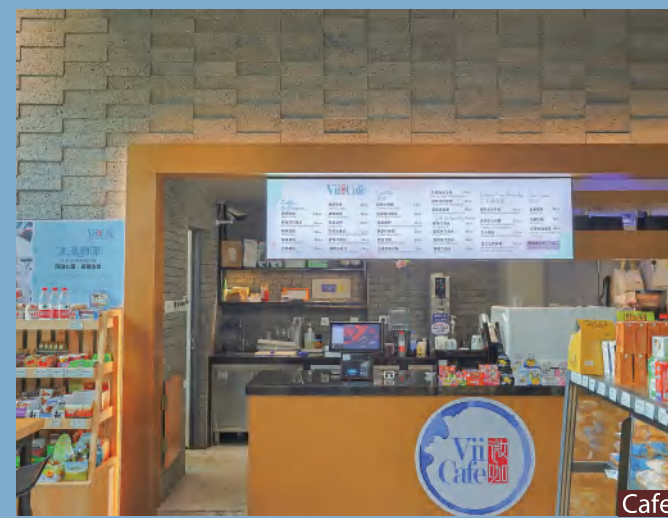
Teacher Office



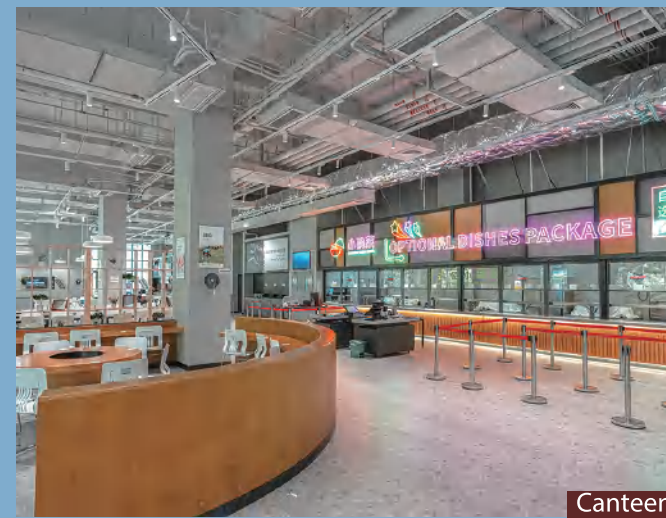
Gymnasium



Basketball Court



Cafe



Canteen



Geography Trip



IA Journey



History Trip



SCIE Food Fair



Arts Performance



Dance Club



Student IGEN Club



Calligraphy Club

Offers

Students at SCIE are highly motivated and aspire to the best overseas universities. The class of 2023 received 47 Oxbridge offers and most have offers from UK G5 universities. Students also apply to top universities, liberal arts colleges and art schools in the US and last year received offers from Johns Hopkins, Chicago, and Berkely as well as Art offers for Rhode Island, Parsons, and Cornell.

The curriculum, while recognising traditional strengths in Science, Mathematics and Engineering, offers the broadest range of subjects of any Cambridge centre in China. SCIE has become a magnet for students looking beyond the STEM subjects and has achieved accolades for Humanities, Arts, and Languages. Our students have gone on to study Literature, Philosophy, and Law as well as interdisciplinary subjects like Architecture, Linguistics, and PPE.

ECAs

At SCIE, alongside academic excellence, emphasis is placed on the non-academic development of a student. There are more than 150 clubs and societies, community service opportunities, inter-house and inter-school competitions and a strong student leadership team. SCIE has continued to be the first-choice high school for students and parents in and beyond Shenzhen. Our pastoral provision provides a form tutor system with tutors mentoring their students through their time at the college. The boarding facility is staffed locally by an experienced team who also oversee student evening study and arrange weekend activities.

CPD

SCIE offers a great range of CPD opportunities. Teachers are encouraged to pick an aspect of teaching or leadership to develop and they can take full advantage of a range of high-quality professional development packages including Karen Ardley Associates, The Great Teaching Toolkit, and Teaching Walkthrus. We also have regular well-structured in-house programmes, access to Cambridge Assessment training, and job-alike workshops through our membership in regional organisations FOBISIA and EARCOS.

Teaching & Learning

Teaching and Learning at SCIE is diverse, research-led and personalised. The Teaching and Learning committee, using the Great Teaching Toolkit, review what outstanding teaching looks like and create a monthly newsletter sharing resources created by leading figures in teaching and learning. Teachers are encouraged to take pride in their pedagogy and share examples of good practice via teaching and learning carousel events.

Admission

With particular focus on English proficiency and Mathematics, the College admits students through a rigorous internal assessment process. The average acceptance rate in the past few academic years has been around 10%.



Student Camping



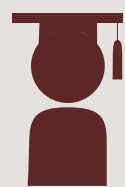
Graduation Ceremony



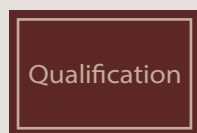
Senior Week

Remuneration

To reach the entry point on the salary scale, teachers must have at least:



A degree in the area of expertise



A teaching qualification (PGCE or equivalent)

≥ 2 Years

Two-years of teaching experience

Salary

Level	RMB per month(Gross)
	2024-2025
20	33700
21	34,500
22	35,400
23	36,200
24	37,000
25	37,800 Maximum entry point
26	38,400
27	39,500 Maximum entry point for Heads of Faculty and SLT
28	40,600
29	41,700
30	42,900
31	44,000
32	45,100
33	46,200

USD 1 = RMB 7.32 GBP 1 = RMB 8.84
(As of 26 Oct, 2023)

In addition, the starting salary is increased by one point for every two years teaching at AS/AL, IGCSE or equivalent. The highest starting point is 25.

After joining SCIE, teachers progress one point each year up to the maximum.

Note: Average tax rate of the salary is about 20%

Benefits

- **Annual Flight allowance**
15,000 RMB/Year both for self and spouse to be paid directly into salary
- **International Medical Cover**
Full Medical coverage for self & 1 dependent (excl. US)
- **Free Schooling**
Up to 2 dependents tuition FREE from age 5 to 18 at affiliated school (GOS/SOIS) and SCIE (UK Y10–Y13)
- **Staff Wellbeing Package**
Online classes on different topics of concern; private, individual sessions provided by Wetalk organization
- **Relocation Allowance**
Up to 7,000 RMB for Single and 10,000 RMB for Couple

We also have a Health and Wellbeing program for staff including weekly, online seminars on different topics of concern, such as Covid-related stress, adjusting to new environments, and work-related stress.



CPD

Accommodation

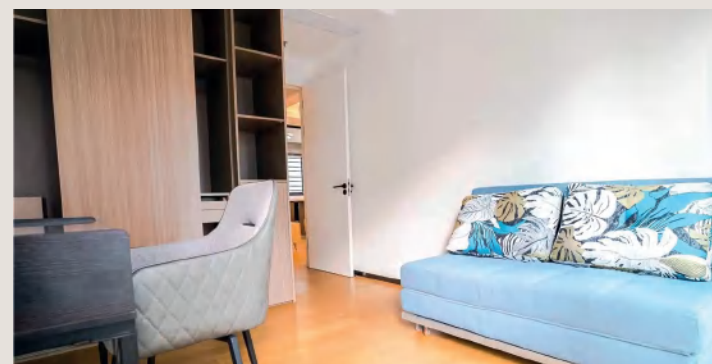
Different styles fully furnished apartments are provided by the school.



Kitchen



Bath Room



Second Bedroom converted Study Room



Master Bedroom

Standard Single Staff Apartment

Master bedroom
Second room converted to study room with folded sofa bed

Couple Standard Apartment

Master Bedroom
Second Bedroom
Inner Balcony

Family Standard Apartment

Master Bedroom
Second Bedroom
Function Room can be converted to Study Room with folded sofa bed, or to a Children Bedroom



Living Room

Location

SCIE located in Futian, the CBD district of Shenzhen. The campus is within walking distance to the international shops, supermarkets, and restaurants. It is a stone's throw away from the Antuo Hill subway station, providing easy and convenient access to the city's extensive metro network.

Cost of Living in Shenzhen



Underground (minumum fare)	¥ 2.00
Taxi (first 2km)	¥ 10.00
(per additional km)	¥ 2.60



(Approx)

Chinese restaurant	¥ 40.00
Chinese banquet-style	¥142.00
Western restaurant	¥150.00



Milk (780ml)	¥ 27.99
Eggs (10)	¥ 18.90
Chicken breast (500g)	¥ 18.60
Tomatoes (500g)	¥ 3.50
Still water(1.5l)	¥ 3.50
Lettuce (500g)	¥ 5.99

Living in Shenzhen

Having celebrated its 40 year Special Economic Zone status in 2020, Shenzhen is one of the most modern cities in the world. It is a well-planned city with large areas of green space and many cycle paths. Compared to most big cities in China, Shenzhen enjoys clean air with easy access to nature.

Shenzhen is a cosmopolitan city that often pleasantly surprises expats. In addition to how green it is, the city offers many cultural attractions and outdoor pursuits. International brands, such as Starbucks, Uniqlo and Sam's Club, are found throughout the many shopping malls and areas.

SCIE has very diversified staff: single, married, married teaching couples and families and they come from all corners of the world. Staff have a wide range of interests and Shenzhen can entertain all of them. For many, the experience of living in Shenzhen far outweighs initial expectations.

Staff Testimonials

"SCIE has been a fantastic place to work. The school environment is always bustling with energy and there is always a friendly face to greet you whether it be a student or a staff member! The school gives its staff members every opportunity for personal and professional development, from well being sessions to dance classes to safeguarding exercises. It is truly a well rounded school, who supports each and every person who comes here. Plus, working in the ever so beautiful Shenzhen with all its atural surroundings and vibrant spots to explore is the cherry on top!" -Yusri van der Schyff (Teacher of English, Form Tutor of G2 and Staff Council Chairman)

"SCIE is one of the few schools where you can really balance work and life; personal time is a huge benefit that allows you to get personal tasks done during daytime. Also, staff members are very proactive in organizing events and group activities, which allows you to share interests in common and gives you the feeling of being part of a family. These two combined, help balance work while allowing you to have a life after class so that you can enjoy all the other activities that SCIE and Shenzhen have to offer." -Carla Costa (Teacher of Physics, Form Tutor of A2, joined SCIE in Aug 2022)

"I have enjoyed working at SCIE greatly. The whole school, from SLT to HR and Property Management, are extremely supportive of teaching staff, allowing teachers to focus improving and honing their classroom practice. Furthermore, the school offers a wide range of professional development opportunities for teachers and the ability to influence the direction of the school through participation in committees. Whilst working at SCIE is demanding, there are many activities available for teachers to destress, such as yoga and squash. Finally, Shenzhen is a great place to live. The climate allows for outdoor activities year round and the city is famous for its parks and outdoor spaces." -Andrew Smith (Teacher of Economics & EPQ, Form Tutor of G2, joined SCIE in Aug 2022)

"SCIE is not just a school; it's a second home where diverse individuals come together to celebrate differences, foster academic excellence, and create lasting memories. Life in Shenzhen, as a newcomer from India, has been an exciting cultural exploration. This dynamic educational institution and the vibrant city it is located in, offer an educational and cultural experience that transcends borders, fostering a deep appreciation for diversity, academic growth, and the creation of lifelong memories." -Apurva Sarkar (Teacher of Physics & EPQ, joined SCIE in Aug 2023)





We look forward to welcoming you to the friendly and supportive SCIE community. If you have any questions about the College, please do not hesitate to contact: hr@scie.com.cn.



Website QR Code

Website: <https://www.scie.com.cn/>

Apply by letter with CV to jobs@scie.com.cn



VR School Tour

Address: 3 Antuoshan 6th Rd, Futian, Shenzhen, China 518040

Tel: +86 (0)755 8349 5025